

## Damaged or Arrived Broken?

Try our 1-Click Warranty Claim

Go to [TechMatte.com/WarrantyClaim](https://TechMatte.com/WarrantyClaim)

OR

Scan the QR Code Below.



## Want More Coverage?

Unlock our Lifetime Warranty

Go to [TechMatte.com/Register](https://TechMatte.com/Register)

OR



TECHmatte

**24/7 Customer Support**



[support@techmatte.com](mailto:support@techmatte.com)

[www.techmatte.com](https://www.techmatte.com)

STAY CONNECTED



@TechMatte



@TechMatte



/TechMatte



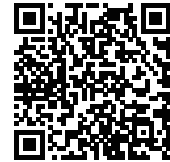
@tech.matte

amFilm®

Hybrid 3D

Installation Guide

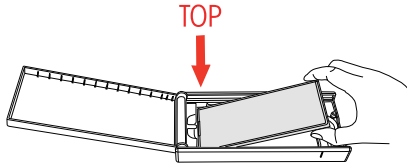
Scan Me



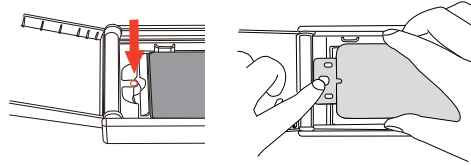
or visit

[www.TechMatte.com/install/hybrid-3D](https://www.TechMatte.com/install/hybrid-3D)

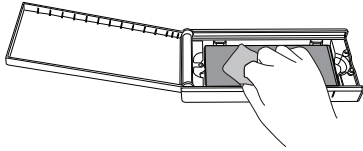
- 1** Open the application box and place the phone inside with the TOP of the phone aligned with the side of the case that the arrow is pointing to.



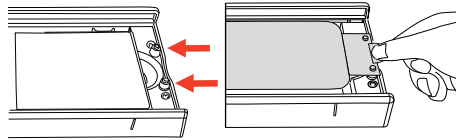
- 4** Secure the screen protector to the top of application box by placing the large plastic peg through the center hole of the top tab (this may come pre-installed), and inserting it into the indentation in the application box. **Make sure the screen protector does not adhere to phone screen at this step.**



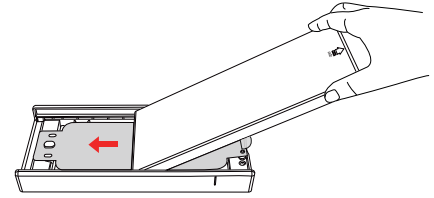
- 2** Clean the phone's screen with the included cleaning wipes and dust removal stickers.



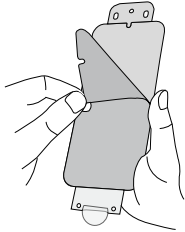
- 5** Align the holes in the tab on the bottom of the screen protector to the plastic pegs on the application box. This will help keep the protector in place. **Make sure the screen protector does not adhere to phone screen at this step.**



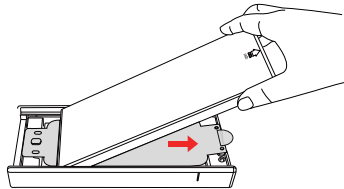
- 7** PUSH the cover of the case back over the phone the opposite way to help reinforce the protector's adhesion to the screen.



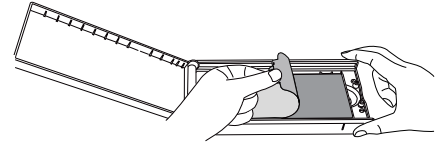
- 3** Peel off the mask film from the screen protector with the Step 1 label.



- 6** PULL the cover of the case over the device and it will roll along the tracks on the sides. This will help to apply the protector to the phone's screen. Pull all the way to the edge of the application case.



- 8** Peel off the secondary mask film and remove the phone from the application Box. The screen protector should now be fully applied.



- 9** If needed, press along the edges to reinforce the adhesive to the screen. Rescan your fingerprint.

